

# Sock Valet

## New Product Design

Presented by Swish Product Design , LLC

22 March 2016

for Valet Product Line

This patented sock assist design combines the basics of our widely used Shoe Valet but with a new pivotal head concept and Sock Shuttle that allow the user to “put on” and “take off” socks with ease. Even if a person has limited motion and reach, they can use this product to assist them with their socks. Great new product for those who are recovering from surgery, from an injury, or limited range of motion.

# Existing Sock Assist Products

- ▶ Several styles exist but all are hard to use.
- ▶ Most require bending and lots of movement.
- ▶ Most require assembly and multiple parts.
- ▶ Most of these are hard to use if you have limited movement
- ▶ Most of these can only help you put your socks on.

## EasyRoll Stocking Donner

Home > Aids to Daily Living > Dressing Aids > EasyRoll Sto



### Images



## Ezy Sock Helper - Double

Home > Aids to Daily Living > Dressing Aids > Ezy Sock



## Easy On / Easy Off Sock Aid Kit

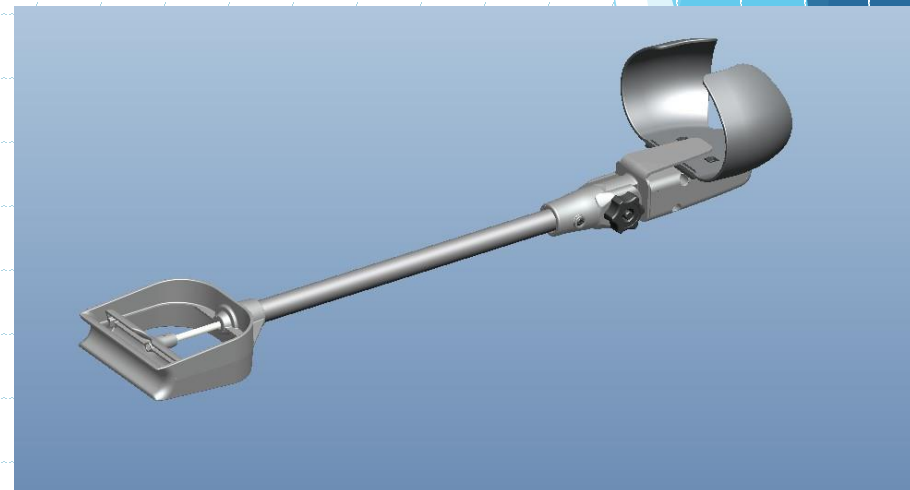
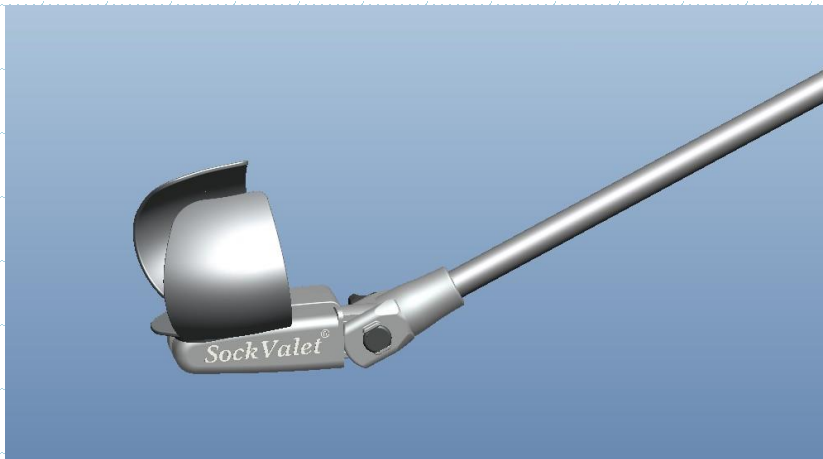
Home > Aids to Daily Living > Dressing Aids > Easy On / E



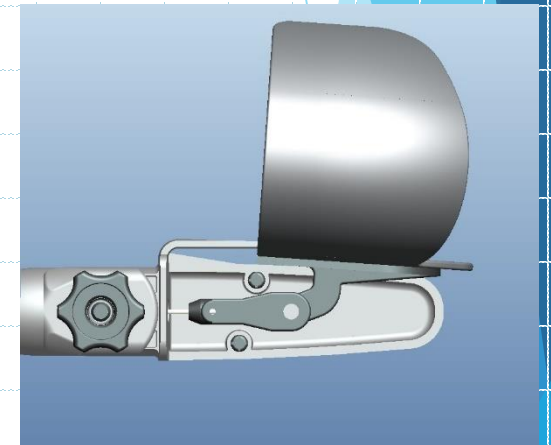
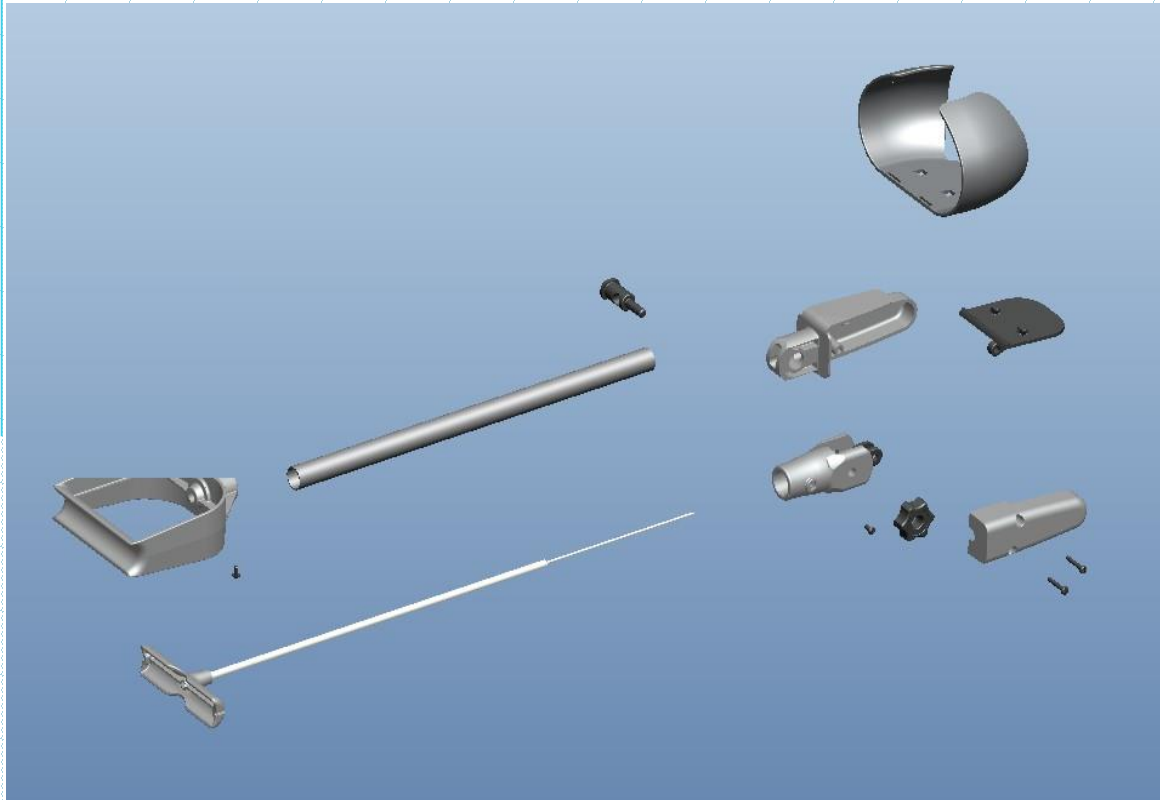
### Images



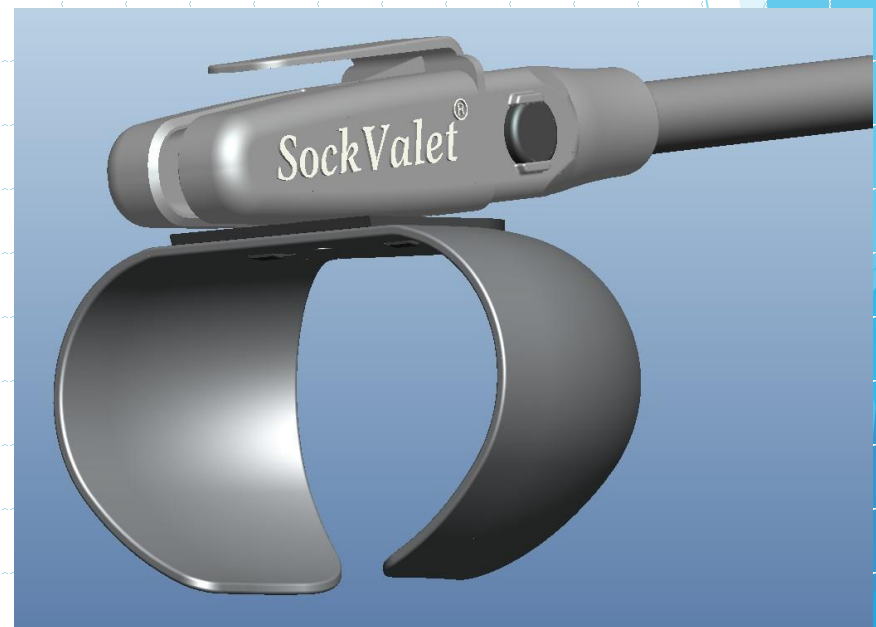
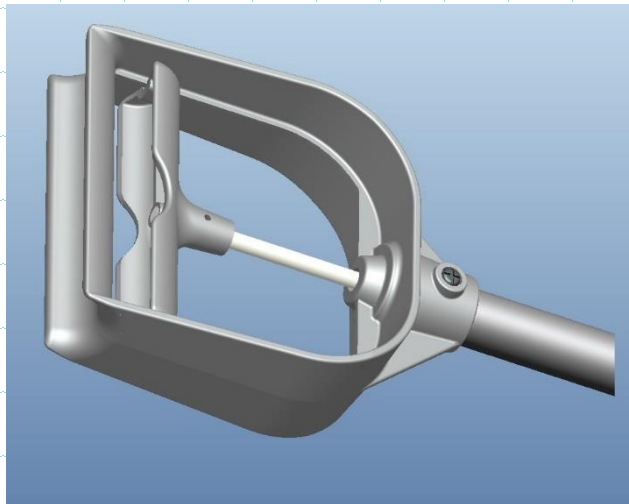
The Sock Valet has been designed for ease of use, both when you put socks on and when you take them off. No multi-parts to deal with, no bending over to operate. The head can be rotated to how you want it to angle into your foot and leg. All parts are on one unit so no loose pieces to carry around or misplace. The handle and grip area is designed for comfort during use.



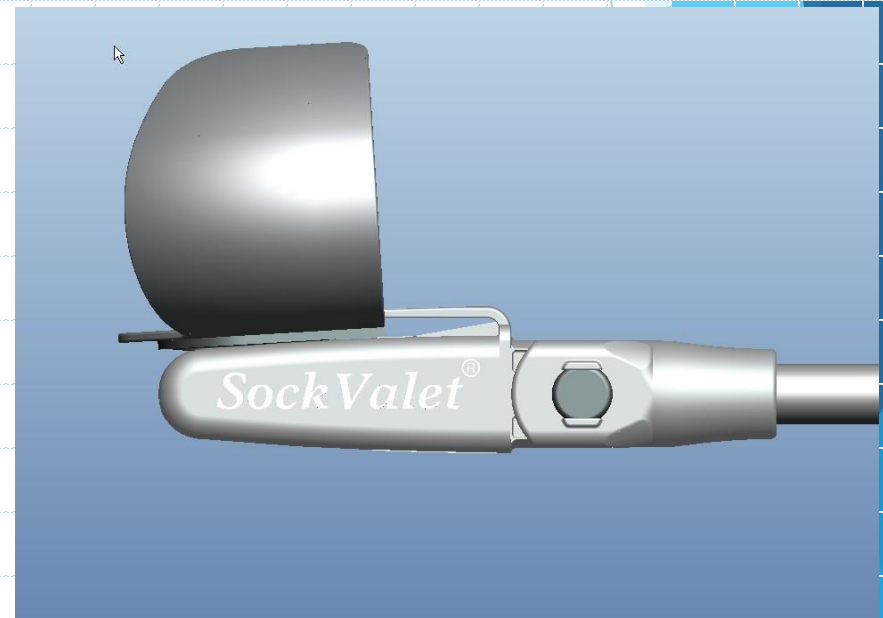
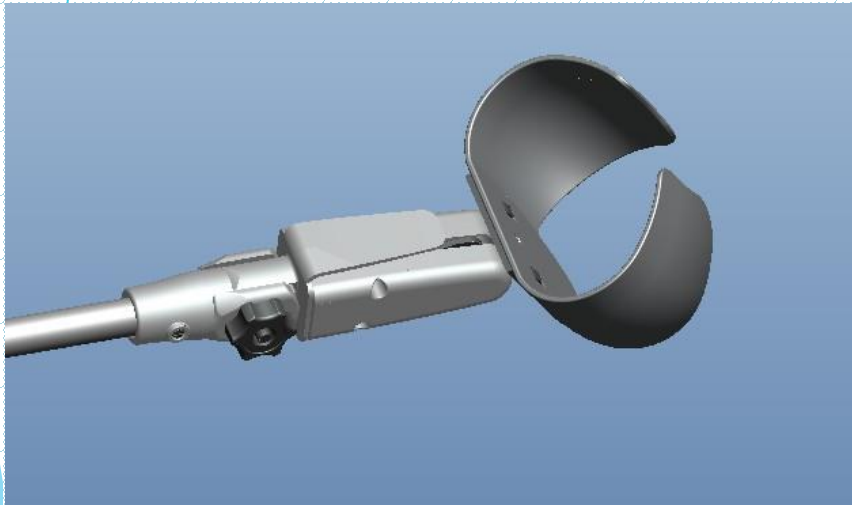
The product design is shown in this section cut through the middle of the product and shows how the main device works. The exploded view shows how all the parts assemble.



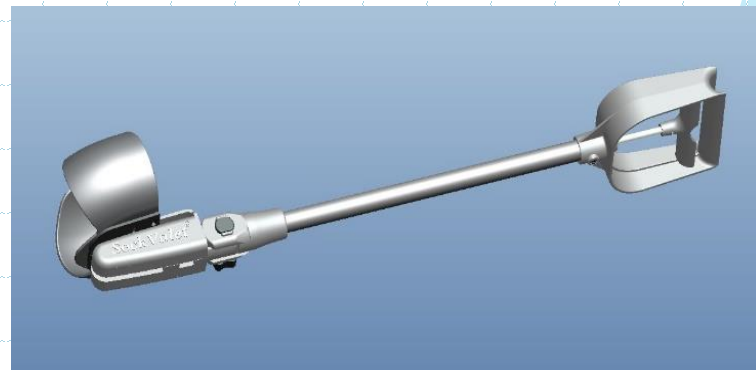
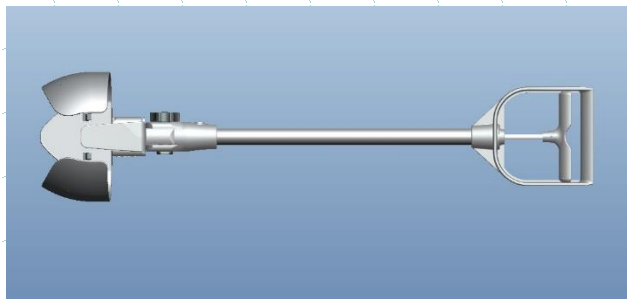
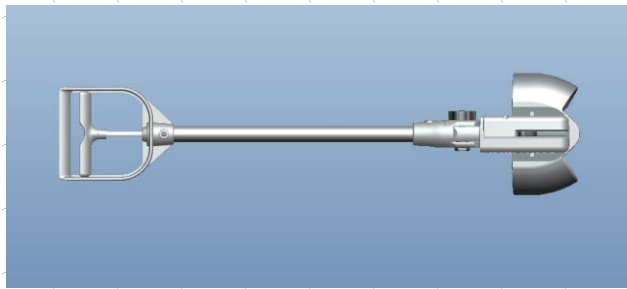
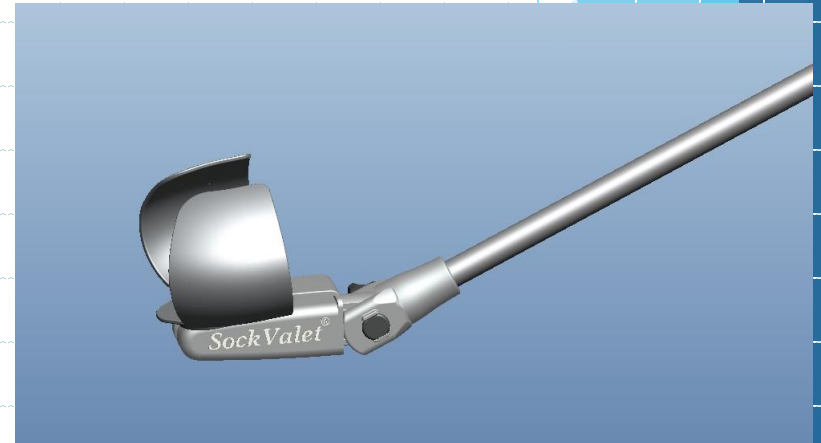
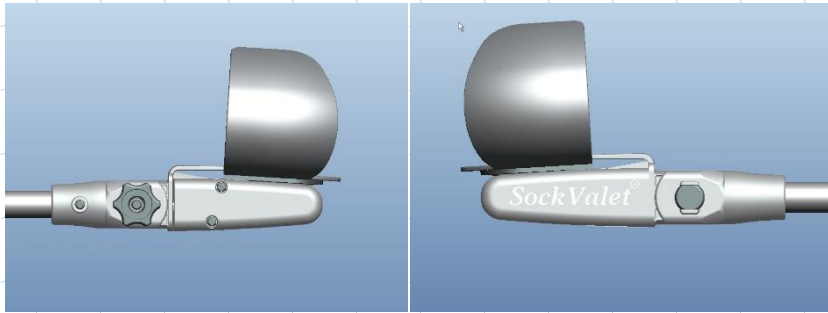
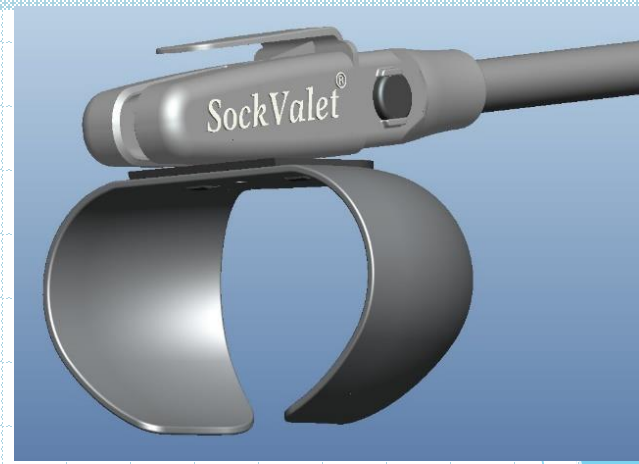
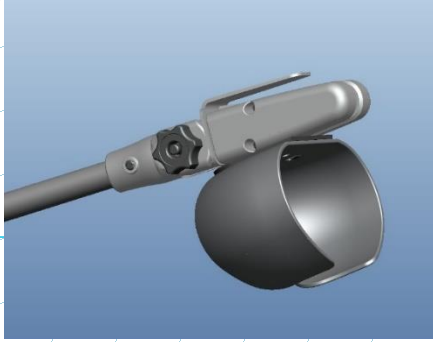
From the new easy to use handle and finger grip on one end to the new shaped sock shuttle at the other end. This Sock Valet makes it easy for users to pull on and to remove socks using very little movement. When you rotate the sock shuttle you can use the shoe/sock horn to remove your shoes and socks. This is done by sliding the horn between the sock or shoe then lifting them off, all without the need to bend over.



To load your sock into the shuttle you simple lay the sock, heel down, inside the C shaped sock shuttle and stretch it over the top and bottom. You pull back the shuttle using the finger grip to move it under the shoe/sock horn to secure it. Now slide your foot into your sock. Once your foot is inside the sock you can release the finger grip and the sock comes loose from the shuttle. That is all it takes.



# Sock Valet Views



# Valet's current products. The Shoe & Boot Valet & Boot Jack





# Valet products & more on their way to assist people with needs.

